



Office of the President of the Philippines  
**GOVERNANCE COMMISSION**  
FOR GOVERNMENT OWNED OR CONTROLLED CORPORATIONS  
3/F, BDO Towers Paseo, 8741 Paseo De Roxas, Makati City, Philippines 1226



02 April 2025

**HON. FRANCISCO P. TIU LAUREL, JR.**

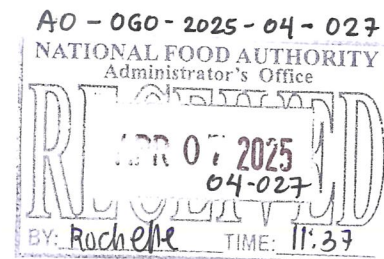
*Secretary, Department of Agriculture  
and NFA Chairperson*

**HON. LARRY R. LACSON, PH.D.**

*Administrator*

**NATIONAL FOOD AUTHORITY**

NFA Building, Visayas Avenue, VASRA,  
Diliman, Quezon City



**RE: TRANSMITTAL OF THE 2025 CHARTER STATEMENT AND  
STRATEGY MAP, AND 2025 PERFORMANCE SCORECARD**

Dear Secretary Tiu Laurel, Jr. and Administrator Lacson,

This is to formally transmit the 2025 Charter Statement and Strategy Map (**Annex A**), and the 2025 Performance Scorecard (**Annex B**) of the **NATIONAL FOOD AUTHORITY (NFA)**, to be posted on the NFA's website in accordance with Section 43 of GCG Memorandum Circular (M.C.) No. 2012-07.<sup>1</sup>

The NFA's proposed Charter Statement was RETAINED and the Strategy Map and Performance Scorecard submitted through a letter dated 02 December 2024 and an email dated 04 December 2024<sup>2</sup> were MODIFIED based on the: (i) discussions made during the Technical Panel Meeting (TPM) held on 20 December 2024; (ii) evaluation of revised documents submitted through the NFA's letter dated 16 January 2025,<sup>3</sup> and emails dated 22 and 30 January 2025, 06 and 21 February 2025, and 21 March 2025;<sup>4</sup> and (iii) agreements during the Performance Target Conference held on 24 March 2025.

Item 9 of GCG M.C. No. 2024-01<sup>5</sup> mandates GOCCs to accomplish the requisite Quarterly Monitoring Reports (*i.e.*, PES Form 4) for the calendar year, detailing their progress in accomplishing their performance targets. The Quarterly Monitoring Reports should also disclose substantial changes in circumstances, if any, that were unforeseen during the TPM that may affect the timely achievement of the GOCC's targets.

**FOR THE NFA'S INFORMATION AND COMPLIANCE.**

Very truly yours,

**ATTY. MARIUS P. CORPUS**  
*Chairperson*



**ATTY. BRIAN KEITH F. HOSAKA**  
*Commissioner*

**ATTY. GERALDINE MARIE B.  
BERBERABE-MARTINEZ**  
*Commissioner*

<sup>1</sup> CODE OF CORPORATE GOVERNANCE FOR GOCCs, dated 28 November 2012.

<sup>2</sup> Both were officially received by the Governance Commission on 04 December 2024.

<sup>3</sup> Officially received by Governance Commission on 21 January 2025.

<sup>4</sup> Officially received by the Governance Commission on 22 January 2025, 23 January 2025, 31 January 2025, 06 February 2025, 21 February 2025, and 21 March 2025, respectively.

<sup>5</sup> ENHANCED PERFORMANCE EVALUATION SYSTEM (PES) FOR THE GOCC SECTOR, dated 28 June 2024.

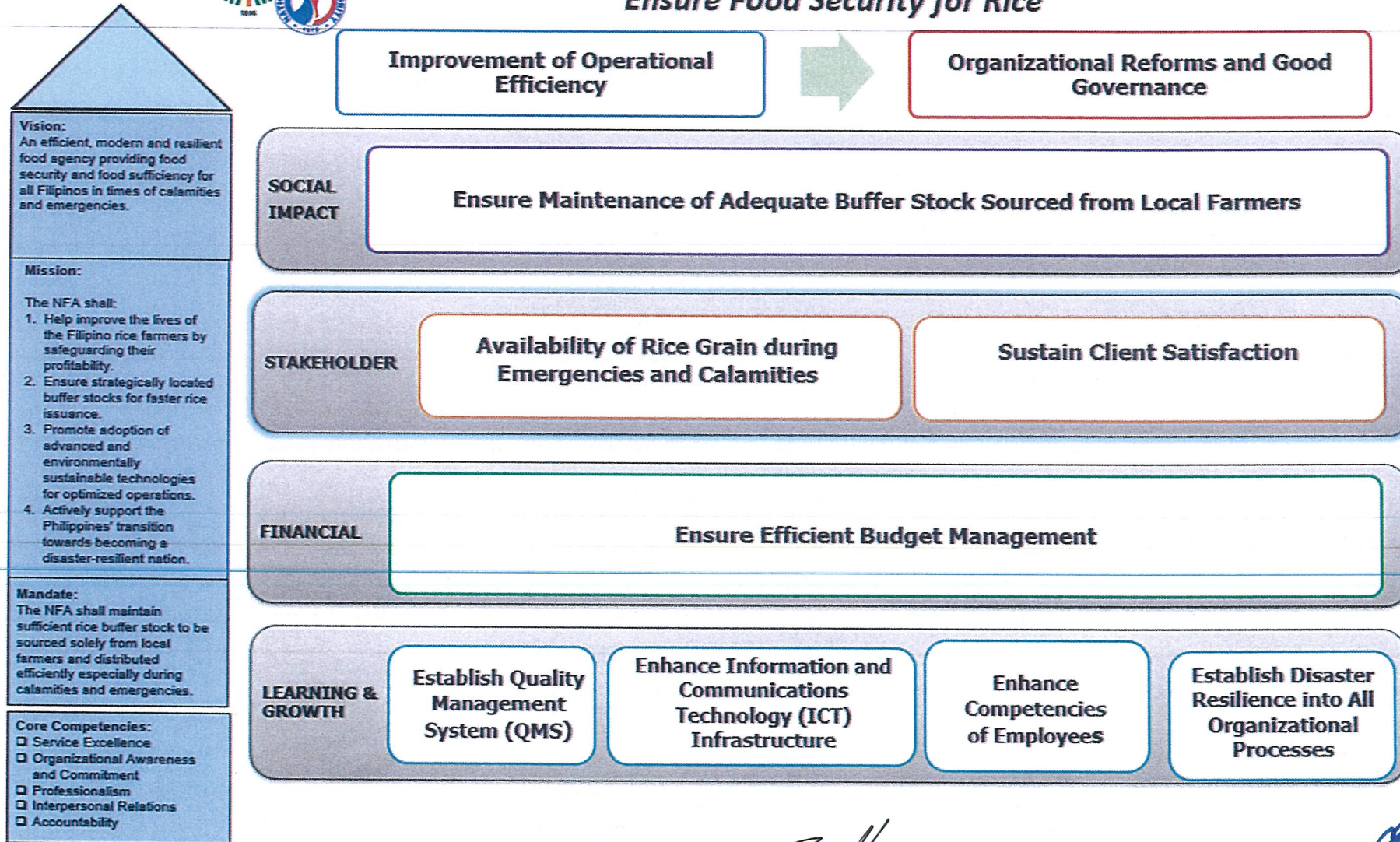






## CY 2025 STRATEGY MAP

*Ensure Food Security for Rice*



*[Signature]*

*[Signature]*



NATIONAL FOOD AUTHORITY (NFA)

Component						Baseline Data		Target	
	Objective/Measure		Formula	Weight	Rating System	2022	2023 (As Reported)	2024	2025
SOCIAL IMPACT	SO 1	Ensure Maintenance of Adequate Buffer Stock Sourced from Local Farmers							
	SM 1	Buffer Maintained Stocks	Actual Level of Buffer Stock in Rice Form	15%	300,000 MT and Above = 15% 250,000 MT to 299,999 MT = 13% 200,001 MT to 250,000 MT = 11% 150,001 MT to 200,000 MT = 9% 100,001 MT to 150,000 MT = 7% 25,001 MT to 100,000 MT = 5% Below 25,000 MT = 0% <sup>1</sup>	140,436 MT	76,882 MT	300,000 MT	300,000 MT
	SM 2	Grains Post-Harvest Facilities Maintained	Total Number of Deliverables Due for 2025 Attained / Total Number of Deliverables Due for 2025	15%	(Actual/Target) x Weight	Not Applicable	Not Applicable	100%	100% Attainment 2025 Deliverable (Based on DBCC Approved Project Implementation Plan)

<sup>1</sup> Rating will be applied in actual performance as of 30 June 2025 and 31 December 2025. Annual rating will be computed based on the average of semestral ratings.

Component						Baseline Data		Target	
	Objective/Measure	Formula	Weight	Rating System		2022	2023 (As Reported)	2024	2025
	SM 3	Stocks Maintained in Good and Consumable Condition	Total Stocks in Good and Consumable Condition / Total Stocks Stored	15%	99.50% to 100.00% = 15% < 99.00% to 99.49% = 12% < 98.50% - 98.99% = 9% 98.00% - 98.49% = 5% < 98% = 0% <sup>2</sup>	99.899%	99.998%	100%	100%
		<b>Sub-Total</b>		<b>45%</b>					
STAKEHOLDERS	SO 2	Availability of Rice Grain During Emergencies and Calamities							
	SM 4	Percentage of Requests for Stock in Times of Emergencies and Calamities Processed Within Prescribed Turnaround Time	Number of Requests for Stock in Times of Emergencies and Calamities Processed Within Prescribed Turnaround Time / Total Number of Requests for Stock in Times of Emergencies <sup>3</sup>	15%	(Actual/Target) x Weight	Cannot Be Validated	575 out of 633 requests have been served	100%	100%
	SO 3	Sustain Client Satisfaction							
	SM 5	Percentage of Satisfied Customers	Number of Respondents Who Gave a Rating of At Least Satisfactory / Total Number of Respondents <sup>4</sup>	10%	(Actual / Target) x Weight  If Less Than 80% = 0%	96.4% (Farmers) <sup>5</sup>  98% (Business Organizations) <sup>6</sup>	99.42%	90%	90%
		<b>Sub-Total</b>		<b>25%</b>					

<sup>2</sup> Rating will be applied in actual performance per month. Annual rating will be computed based on the average of monthly ratings.

<sup>3</sup> Shall be based on NFA Citizen's Charter as submitted to or approved by the Anti-Red Tape Authority (ARTA).

<sup>4</sup> Covers customers availing the GOCC's **external services** only.

<sup>5</sup> The data is based on the survey results using the methodology of the Governance Commission.

<sup>6</sup> *Ibid.*

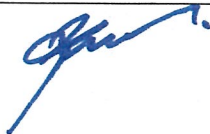


Component					Baseline Data		Target		
	Objective/Measure	Formula	Weight	Rating System	2022	2023 (As Reported)	2024	2025	
FINANCE	SO 4	Ensure Efficient Budget Management							
	SM 6	Budget Utilization Rate:							
	SM 6a	Obligations Subsidy Budget Utilization Rate	Total Obligated Subsidy / Total Corporate Operating Budget from Subsidy (Both Net of PS Cost)	5%	(Actual / Target) x Weight	Not Applicable	16.60%	90%	90%
	SM 6b	Disbursements Subsidy Budget Utilization Rate	Total Disbursements from Subsidy / Total Obligated Subsidy (Both Net of PS Cost)	5%	(Actual / Target) x Weight	Not Applicable	96.50%	90%	90%
	SM 6c	Corporate Fund Budget Utilization Rate	Total Disbursements from Internally Generated Fund (IGF) /Total Corporate Operating Budget from IGF (Both Net of PS Cost)	5%	(Actual / Target) x Weight	Not Applicable	74.50%	90%	90%
	Sub-Total		15%						



Component					Baseline Data		Target		
	Objective/Measure		Formula	Weight	Rating System	2022	2023 (As Reported)	2024	2025
LEARNING & GROWTH	SO 5	Establish Quality Management System (QMS)							
	SM 7	Attain ISO 9001:2015 Certification	Actual Accomplishment	2.5%	All or Nothing	Maintained Existing ISO 9001:2015 Certification and Obtained ISO 9001:2015 Certification for Ilocos Regional Office and La Union Branch Office	Maintained existing ISO 9001:2015 Certifications (Region 1 and Region 3)  Obtained ISO Certification for NFA Region 6 and Iloilo Branch Office	Maintain Existing ISO 9001:2015 Certification	Maintain Existing ISO 9001:2015 Certification for All Processes Covered in 2024 <sup>7</sup>
				2.5%					Obtain ISO 9001:2015 Certification for Two (2) Branch Offices
	SO 6	Enhance Information and Communications Technology (ICT) Infrastructure							
	SM 8	Percentage Completion of ISSP	Total Number of Deliverables <sup>8</sup> Due for 2025 Attained / Total Number of Deliverables Due for 2025	5%	(Actual / Target) x Weight	33.33% of 2022 Deliverables Attained	AFMECH Program Capacity Building for NFA Engineers on Geo- Tagging Technology	100% Attainment of 2024 Deliverables	100% Attainment of 2025 Deliverables (Based on the ISSP 2025 – 2027 as endorsed by the DICT)

<sup>7</sup> NFA Regional Office I, NFA Central Luzon Regional Office, and NFA Western Visayas Regional Office.  
<sup>8</sup> Deliverables refer to systems (applications)





Component					Baseline Data		Target		
	Objective/Measure	Formula	Weight	Rating System	2022	2023 (As Reported)	2024	2025	
	SO 7	Enhance Competencies of Employees							
	SM 9	Percentage of Employees with Required Competencies Met	Competency Level 2025 – Competency Level 2024;  Where Competency Level = Total Number of Employees with Required Competencies Met / Total Number of Employees	2.5%	All or Nothing	Not Applicable	NFA Competency Baseline for 2023 is 2.96%. This is 1% higher than 2022 Competency Baseline which is at 25.95%.	Increase from 2023 Competency Level	Increase from the 2024 Actual Competency Level
	SO 8	Establish Disaster Resilience into all Organizational Processes							
	SM 10	Development and Implementation of Disaster Risk Reduction and Management (DRRM) Plan	Actual Accomplishment	2.5%	All or Nothing	Not Applicable	Not Applicable	Not Applicable	Board-Approved Public Service Continuity Plan (PSCP)
		Sub-Total		15%					
	TOTAL		100%						
BONUS STRATEGIC MEASURES:									
FINANCIAL	GAD Budget Utilization Rate	Actual Disbursement for GAD-related Activities / Total COB	1%	All or Nothing	Not Applicable	Not Applicable	Not Applicable	5% of Total COB	



Component					Baseline Data		Target	
	Objective/Measure	Formula	Weight	Rating System	2022	2023 (As Reported)	2024	2025
INTERNAL PROCESS	ISO Certification on any of the following Standards:							
	i. Environmental Management System (EMS) Certification	Actual Accomplishment	1%	All or Nothing	Not Applicable	Not Applicable	Not Applicable	ISO 14001:2015 Certification
	ii. Business Continuity Management System (BCMS)	Actual Accomplishment		All or Nothing	Not Applicable	Not Applicable	Not Applicable	ISO 22301:2019 Certification

For GCG:

  
ATTY. BRIAN KEITH F. HOSAKA  
Commissioner

For NFA:

  
HON. LARRY DEL ROSARIO LACSON, Ph.D.  
Administrator